



LARDEAU VALLEY COMMUNITY DEVELOPMENT

FINAL REPORT APRIL 2021

This report is a community development road map to support the residents and to ensure their long-term resilience and independence. Funded by Columbia Basin Trust, it belongs to the community and is the result of many meaningful conversations and meetings with community members over an 18-month period.

Wendy Booth
Granite Consulting
wndbooth@gmail.com

LAND ACKNOWLEDGEMENT

It is acknowledged that the Lardeau Valley is situated on the unceded traditional territories of the Ktunaxa, Secwepemc, Sinixt and Syilx.

ACRONYMS

The following acronyms are used throughout this report and this chart is for reference.

ACA	Argenta Community Association
CFCK	Community Futures Central Kootenay
CKCA	Columbia Kootenay Cultural Alliance
EDC RRA	Economic Development Commission / Rural Revitalization Strategy
FWCP	Fish and Wildlife Compensation Program
GBCS	Grizzly Bear Coexistence Solutions
IH	Interior Health
IK	Imagine Kootenay
JLCA	Johnsons Landing Community Association
KACC	Kaslo and Area Chamber of Commerce
KAST	Kootenay Association for Science and Technology
KULYN	Kaslo & Up the Lake Youth Network
KBFA	Kootenay & Boundary Farmers Advisors
KDCFS	Kaslo & District Community Forest Society
KHS	Kaslo Housing Society
KiN	Kaslo Infonet Society
KORTS	Kaslo Outdoor Recreation and Trails Society
KSAR	Kaslo Search and Rescue
KVFD	Kaslo Volunteer Fire Department
LVCC	Lardeau Valley Community Club
LINKS	Lardeau Valley Opportunity LINKS Society
MFLNRORD	Ministry, Forests, Lands, Natural Resource Operations & Rural Development
MOTI	Ministry, Transportation & Infrastructure
MWWF	Mt. Willet Wilderness Forever
NKLT	Nelson Kootenay Lake Tourism
RDCK	Regional District of Central Kootenay
VoK	Village of Kaslo

LARDEAU VALLEY COMMUNITY DEVELOPMENT REPORT

TABLE OF CONTENTS

- Acronyms 1
- Executive Summary..... 4
- Principles and Scope 5
 - Lardeau Valley Project Scope and Principles..... 5
- Timeline & Engagement Activities 6
- Current Reality 8
- Foundation Principles 9
 - Environmental Values..... 9
 - Internet Connectivity..... 9
 - Power Stability..... 9
 - Support for Existing Residents..... 10
 - Sustainability 10
- Projects and Strategies 11
 - Introduction 11
 - Definitions..... 11
- Argenta Community Association (ACA) 12
- Agriculture Industry (AI) 12
- Columbia Basin Trust (CBT)..... 13
- Columbia Kootenay Cultural Alliance (CKCA) 18
- Community Associations (CA)..... 19
- Economic Development Commission Rural Revitalization Strategy (EDC RRS) 19
- Grizzly Bear Coexistence Solutions (GBCS) 22
- Johnsons Landing Community Association (JLCA) 23
- Kaslo & Area Chamber of Commerce (KACC) 23
- Kaslo & Up the Lake Youth Network (KULYN) 26
- Kaslo & District Community Forest Society (KDCFS)..... 26
- Kaslo Housing Society (KHS) 27
- Kaslo Infonet Society (KiN)..... 28

Kaslo Outdoor Recreation and Trails Society (KORTS)	29
Lardeau Valley Opportunity Society (LINKS).....	30
Lardeau Valley Community Club (LVCC)	35
Mt. Willet Wilderness Forever (MWWF)	36
Nelson Kootenay Lake Tourism (NKLT).....	36
Provincial Government	37
Interior Health (IH)	37
Ministry, Forest Lands Natural Resource Operations & Rural Development (MFLNRORD)	37
Ministry, Transportation and Infrastructure (MOTI).....	38
Regional District of Central Kootenay (RDCK).....	41

EXECUTIVE SUMMARY

The residents of the Lardeau Valley, despite the challenges of living in a rural remote area of British Columbia are incredibly resilient. The intent of this report is to create a community development road map to support the residents and ensure their long-term resilience. This report is funded by Columbia Basin Trust; however, it belongs to the community and is the result of numerous meaningful conversations and meetings with community members over 18 months, in person, virtually, online surveys and phone interviews.

As part of the Columbia River Treaty, in 1966 Duncan Dam was built destroying homes, businesses and ecologically valuable lands. The forestry sector has seen a drastic decline in recent years, in addition, the area experiences frequent hydro outages and limited cell coverage due to its remoteness.

Five (5) foundational principles emerged during community consultations. The foundational principles are core to the long-term resiliency for the residents and critical to the success of the projects and strategies outlined in this report.

1. Environmental Values
2. Internet Connectivity
3. Power Stability
4. Support for Existing Residents
5. Sustainability

In total there are 65 projects and strategies that were identified. For each, the following have been identified:

- Champion/Lead
- Advocate
- Supporter
- Timeline
- Success Factor
- Recommendation

Where a project or strategy already exists, the recommendation is to continue, expand or enhance it. In many cases there are multiple organizations that can be part of the project or strategy.

The recommendations in the report will change over time, some already exist and others may never be actioned as community priorities change and capacity within organizations shifts. The projects, strategies and associated recommendations are captured as a moment in time as the community moves forward. This document should be treated as a dynamic tool for future community development and as such the list will evolve as projects and strategies are initiated, completed, funding becomes available and community priorities shift.

The true measure of success for this report will be a community where residents are thriving, the natural environment is protected, the economy is stable, and community assets are functioning and well maintained.

Develop and facilitate a community engagement process for the communities of the Lardeau Valley.

Identify challenges, opportunities, assets, tactics, potential community projects, as well as short and long-term strategic direction.

By engaging directly with residents of the Lardeau Valley throughout the entire process.

Ensure the process is guided by resident input.

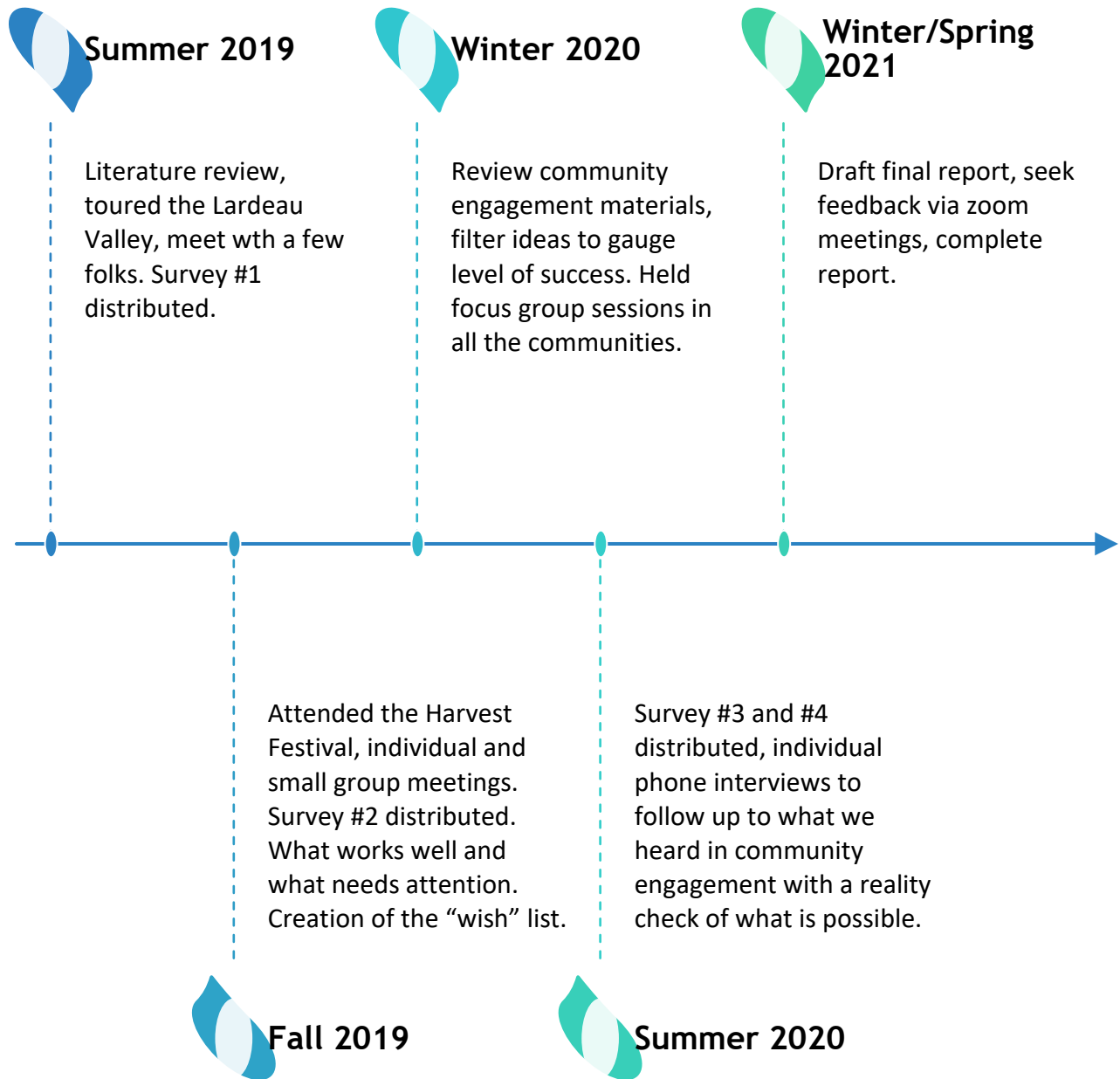
With the objective to strengthen the long-term viability of the region.

Build a plan that will create a path to a more resilient community respecting the wide range of community values.

PRINCIPLES

1. Meaningful engagement
2. Residents will guide the overall process & outcomes
3. Focus on ideas and how they can be achieved
4. Focus on short and long-term strategies
5. Not to replace any current projects or programs, rather enhance them

TIMELINE & ENGAGEMENT ACTIVITIES



Lardeau Valley Project Timeline	Jul-19	Aug-19	Sep-19	Oct-19	Nov-19	Dec-19	Jan-20	Feb-20	Jun-20	Jul-20	Aug-20	Sep-20	Oct-20	Nov-20	Dec-20	Jan-21	Feb-21	Mar-21	Apr-21
Literature Review	X																		
Develop scope and principles	X																		
Meeting A. Watson & A. Ambrosone	X																		
Trip to LV		X																	
Meeting A. Watson & A. Ambrosone		X																	
Survey #1 Literature Review		X	X																
Trip to LV-Harvest Festival				X															
Meeting A. Watson & A. Ambrosone				X															
Current Status review				X	X														
Survey #2 Tell me your ideas					X	X													
Meeting A. Watson & A. Ambrosone						X													
Idea Generation					X	X	X												
Meeting A. Watson & A. Ambrosone							X												
Trip to LV-Focus Groups							X												
Filter ideas								X											
Meeting A. Watson & A. Ambrosone								X											
Meeting A. Watson & A. Ambrosone									X										
Interviews										X	X								
Survey development												X							
Survey #3 Feedback on ideas-in depth													X						
Survey #4 Feedback on ideas - overview													X	X					
Meeting A. Watson & A. Ambrosone														X					
Meeting A. Watson & A. Ambrosone																X			
Report writing															X	X	X		
Feedback on final draft																		X	
Final Report Edits																			X

Strengths

- Technology infrastructure
- Emergency preparedness
- Rural lifestyle
- School Infrastructure
- Community halls
- Recreation sites
- Historical past
- Natural environment
- Community engagement
- Talented skilled workforce
- Agricultural land
- Residents are resilient and diverse

Weaknesses

- Power instability
- Distance from urban centre
- Lack of tourism infrastructure
- Silos between communities and people
- Perception that Government makes decisions without local input
- Lack of capacity
- Barriers to business success
- Adapting to COVID

Opportunities

- Power stability
- Expand and market tourism assets
- Community assets and public spaces
- Emergency communication
- External relationships
- Maximize school property
- Housing
- Community leadership
- Economic Development
- Social sector development
- School infrastructure
- Value added forest products

Threats/Risks/Challenges

- Wildfires
- Debris flows
- Power stability
- Population decline
- Rate of deforestation
- Climate change

FOUNDATION PRINCIPLES

Foundation principles lay the groundwork and basis which enables all other activities to be successful. These principles are core to the long-term resiliency for the residents of the Lardeau Valley.

ENVIRONMENTAL VALUES

The residents of the Lardeau Valley have a very strong relationship with their natural environment, for many the natural landscape is why they choose to live there. Maintaining wild and remote healthy ecosystems plays a significant role in the cultural identity of the residents.

INTERNET CONNECTIVITY

Kaslo InfoNet Society (KIN), non-profit founded in 1996, based in Kaslo. It is the local internet service provider. Their objective is to provide internet services to rural communities that are comparable in cost and capacity to what citizens in the major cities receive.

The baseline requirement that communities need is symmetrical gigabit internet service, allowing two-way communications for download and upload at similar speeds. Currently this is not possible, however work is in progress to achieve this over the next few years.

All communities in the Lardeau Valley have wireless internet service. Depending on the desired level of service, most have is 3 mbsp down and 1.5 mbsp up or 5 mbsp down and 1.5 mbsp up. Recently Telus has offered hardwire service to Cooper Creek however this has limited upload speeds.

POWER STABILITY

The Lardeau Valley has a long history of power outages. In addition to the loss of power, this results in prolonged highway and road closures leading to isolation for residents and restricts the delivery of goods and services. Public safety and minimizing the impacts are key. Action is being taken to develop short, medium and long-term mitigations of power interruptions.

The Lardeau Valley Power Stability Committee has been developed with the following deliverables:

- Engage with local community members on each of the deliverables, and work in collaboration with the Regional District of Central Kootenay (RDCK).
- Identify local impacts of power outages through direct resident engagement, and compile data of the same.
- Summarize existing data, identify and fill any data gaps. Identify key trends, issues to impacts and strategies to address.
- Identify specific community coordination actions to ensure essential supplies and services are available in the event of a power outage.
- Identify what proactive actions could be taken at an individual resident level, by businesses and community organizations and what actions could be taken at a community level.

- Identify alternative energy opportunities that may address impacts of local power outages. These may include but are not limited to mobile diesel generation to provide power “on demand”, back-up generators, solar arrays and any other forms of power generation that are installed at community sites.
- Prepare analysis of reasonability of each of the above opportunities, including a high-level cost estimate, return on investment, estimated timeline to implement, any key barriers, and any available funding sources.
- Support research to identify root cause of outages.
- Summarize all findings in a draft report and share findings with key stakeholders for feedback. Revise as needed.

The recommendations of the Lardeau Valley Power Stability Committee should be considered for implementation.

SUPPORT FOR EXISTING RESIDENTS

The primary consideration for any new projects and strategies should be current residents. This became apparent during the community consultation. The secondary benefit of this approach is attracting new residents to the region.

SUSTAINABILITY

Sustainability for rural remote communities is key to success. People of all ages are thriving, living in a natural environment with healthy ecosystems, economic stability and social supports.

PROJECTS AND STRATEGIES

INTRODUCTION

The following projects and strategies were identified by residents of the Lardeau Valley during the engagement process. For each strategy and project, a champion/lead, advocates and potential supporters have been identified. The majority of strategies and projects have multiple groups involved. Each project and strategy has been rated on the level of success, proposed timeline and includes a recommendation.

This list will evolve as projects and strategies are initiated, funding is available and community priorities shift.

DEFINITIONS

Champion/Lead – An entity(ies) that will take the lead on the project or strategy.

Advocate – An organization that will publicly support the project or strategy to decision makers, whether verbally or in writing.

Potential Supporters – Potential supporters for the project or strategy, either financial, in-kind, capacity building or advisory

Success Factor

- 1 - Low chance of success, lacks funding, an unclear path forward to completion, not a high priority.
- 2 - Further ground-work is required to define objectives and a path forward.
- 3 - Community support exists, however not a priority for decision makers at this time.
- 4 - Strong community support exists, a clear path forward exists.
- 5 - Already exists or is in progress, enhancements or continuation of the project are supported.

ARGENTA COMMUNITY ASSOCIATION (ACA)

1. Argenta Hall

Community halls are a hub where residents gather for many events and meetings in rural communities. The long-term maintenance of these assets is key to the health and well-being of residents of all ages. The Argenta Hall currently hosts monthly luncheons and is home to the library.

Recommendation – ACA to work with RDCK Area D Director to determine long term infrastructure needs. Operational needs will continue to be funded by Area D Recreational Services.

Strategy/Project	Champion/Lead	Advocate	Potential Supporter	Timeline	Success Factor
Argenta hall	ACA	ACA	ACA, CBT, RDCK	In progress	4
Usage at community halls	ACA, JLCA, LVCC	ACA, JLCA, LINKS, LVCC	CBT, RDCK	In progress	5

AGRICULTURE INDUSTRY (AI)

2. Link under utilized agricultural land with potential users

The region has rich agricultural land, in some cases, for a variety of reasons it is not being utilized to its full potential. At the same time, there are residents that have an interest in farming, however, they do not have access to land. While there may be challenges linking the farmer with the appropriate land and putting agreements in place, the benefit would result in increasing agricultural land productivity. There are instances where this is occurring on an informal basis.

Recommendation – Continue to support agricultural land to be utilized for its best and highest value. Create a template agreement for landowners and potential farmers. Develop a process to match landowners with potential farmers.

3. Privately owned conservation land for agricultural use

There is private land in the Lardeau Valley that is protected for conservation values. In some cases, this land is prime agricultural land that is not being used to its highest potential. Using this land for agricultural purposes would support local food security, however it will likely lose its conservation values. Each piece of land needs to be evaluated on an individual basis to determine the best use. The private land owners need to be included in these discussions.

Recommendation – Explore using private conservation land for agricultural use on an individual basis.

Strategy/Project	Champion/Lead	Advocate	Potential Supporter	Timeline	Success Factor
Link under used agriculture land w/potential users	Agricultural Industry		Agricultural Industry, CBT	In progress	2

Strategy/Project	Champion/Lead	Advocate	Potential Supporter	Timeline	Success Factor
Privately owned conservation land for agriculture use	Agricultural Industry	Conservation land owners, Agricultural industry, RDCK	CBT, Conservation land owners, RDCK	3-6 yrs	2
Extend the growing season	EDC RRS	Agricultural Industry	Agricultural Industry , CBT, EDC RRS, RDCK	In progress	3
Agricultural seed production program	LINKS	Agricultural Industry , BC Seed Coop, Food Hub, KBFA, LINKS	Agricultural Industry , BC Seed Coop, CBT, EDC RRS, KBFA, Provincial Government	In progress	4
Large-scale greenhouse	LINKS	Agricultural Industry , Private Businesses	Agricultural Industry , CBT, EDC RRS, KBFA, Private Businesses	3-6 yrs	3
Purchase a cooler truck	LINKS	LINKS, Private Businesses	Agricultural Industry , CBT, EDC RRS, Private Businesses	1-3 yrs	4
Storage facility for products	LINKS	Agricultural Industry , Private Businesses, Provincial Government, RDCK	Agricultural Industry , CBT, KBFA, Private Businesses, Provincial Government	3-6 yrs	2
Farm incubation program	LINKS	Agricultural Industry , EDC RRS, KACC, KBFA	CBT, EDC RRS, RDCK	In progress	5

COLUMBIA BASIN TRUST (CBT)

4. Agriculture Advisor Program

The aim of this program is to support the resilience and sustainability of the agricultural sector. Services include: supply chain management, packaging, human resources, succession planning, marketing, distribution, financial management, safety plans, business and strategic planning. This confidential one on one advice is free. There are challenges in accessing this program due to remoteness and advisors not understanding small scale farming.

Recommendation - Encourage agricultural businesses to seek support from the Agriculture Advisor Program to address barriers to entry.

5. Basin Business Advisor Program

The Basin Business Advisors Program supports and inspires entrepreneurship and builds economic capacity supporting existing businesses. Services include: one on one business consulting, digital marketing, e-commerce, website development, government support, human resources, cash flow, branding and marketing, operations, strategic planning, financing and succession planning. Only a small number of businesses have accessed this program due to remoteness. With technological improvements, this can be overcome.

Recommendation – Encourage local businesses to seek support from the Basin Business Advisor Program, and the program to address barriers to entry.

6. Non-Profit Advisor Program

This program is intended to provide support to non-profit organizations. It is designed to increase capacity enabling non-profits to become more sustainable and stronger in achieving their goals.

Recommendation – Encourage non-profit organizations to seek support from the Non-Profit Advisor Program.

7. Wage Subsidy Programs

Columbia Basin Trust offers several wage subsidy programs:

- School Works Program provides wage subsidies to employers to help hire full-time students on a part-time basis throughout the school year.
- Apprentice Wage Subsidy provides a wage subsidy to businesses, non-profit organizations, First Nations communities, and local governments to hire first level apprentices to complete their first level work-based training requirements in many trades.
- Co-Op Wage Subsidy provides wage subsidies to employers to help them hire post-secondary students enrolled in full-time education and participating in a recognized university or college co-op education program.
- Career Internship Program provides eligible employers with up to 50 per cent of an intern's salary (up to \$25,000 over a seven-to-12-month term) for full-time, career-focused positions that lead to permanent employment.
- Summer Works Program provides small businesses with a wage subsidy to hire full-time high school and post-secondary students during the school summer break.
- Basin Food Producer Wage Subsidy Program provides support to primary food producers to hire employees as needed throughout the 2021 growing and harvesting season. This program helps increase access to locally grown, healthy food.

Recommendation – Ensure that these programs are known to organizations and advocate for their continuation.

Strategy/Project	Champion/Lead	Advocate	Potential Supporter	Timeline	Success Factor
Argenta Hall	ACA	ACA	ACA, CBT , RDCK	In progress	4
Usage at community halls	ACA, JLCA, LVCC	ACA, JLCA, LINKS, LVCC	CBT , RDCK	In progress	5
Link under used agriculture land w/potential users	Agricultural Industry		Agricultural Industry, CBT	In progress	2
Privately owned conservation land for agriculture use	Agricultural Industry	Conservation land owners, Agricultural industry, RDCK	CBT , Conservation land owners, RDCK	3-6 yrs	2
Agriculture Adviser Program	CBT		CBT	In progress	5
Basin Business Adviser Program	CBT		CBT	In progress	5
Non-profits Advisor Program	CBT		CBT	In progress	5
Wage Subsidy Programs	CBT		CBT	In progress	5
Arts hub	CKCA	CKCA, Local Artists	CBT , CKCA, Local Artists	1-3 yrs	2
Business hub	EDC RRS	CFCK, KACC, LINKS	CBT , CFCK, EDC RRS, KACC, LINKS, RDCK	1-3 yrs	4
Supply chain management and coordination	EDC RRS	KACC, Kootenay Car Share, LINKS	CBT , KACC, RDCK	1-3 yrs	3
Extend the growing season	EDC RRS	Agricultural Industry	Agricultural Industry, CBT , EDC RRS, RDCK	In progress	3
Electric fencing	GBCS	Community Groups, GBCS, LINKS, Provincial Government, RDCK	CBT , Provincial Government, RDCK, FWCP	In progress	5
Grizzly bear safety workshops	GBCS	Community Groups, GBCS, LINKS, Provincial Government, RDCK	CBT , RDCK, FWCP	In progress	5

Strategy/Project	Champion/Lead	Advocate	Potential Supporter	Timeline	Success Factor
Johnsons Landing hall	JLCA	JLCA	CBT , JLCA, RDCK	In progress	4
Rebrand KACC	KACC	EDC RRS, LINKS	CBT , LINKS, RDCK	1-3 yrs	5
Business directory	KACC	CFCK, KACC, LINKS, NKLT, RDCK	CBT , EDC RRS, KACC, NKLT, Provincial Government	In progress	5
Capacity in KACC	KACC	KACC, Private Businesses	CBT , EDC RRS	1-3 yrs	5
Buy local campaign	KACC	KACC, Private Businesses, RDCK	CBT , EDC RRS, KACC, RDCK	In progress	5
Welcome wagon	KACC	LINKS, Private Business, RDCK	CBT , LINKS, RDCK, Real Estate Industry	3-6 yrs	5
North Kootenay Lake brand	KACC	KACC, LINKS, Provincial Government, RDCK	CBT , EDC RRS, NKLT, RDCK	In progress	5
Mentorship strategy for youth	KULYN	LVCC, LINKS, Local Youths, RDCK	CBT , LVCC, RDCK	3-6 yrs	4
Value added forestry products	KDCFS	Forestry Industry, Private Businesses, Provincial Government, RDCK	CBT , EDC RRS, Forestry Industry, Private Businesses, MFLNRORD, RDCK	In progress	3
Multi-generational housing project	KHS	KHS, LINKS, Provincial Government, RDCK	CBT , KHS, Private Businesses, Provincial Government, RDCK	In progress	2
Senior's housing needs assessment	KHS	KHS, LINKS, Provincial Government, RDCK	CBT , Community Groups, KHS, LINKS, Provincial Government, RDCK	In progress	5
Internet Service	KiN	Federal Government,	CBT , EDC RRS, Federal	In progress	5

Strategy/Project	Champion/Lead	Advocate	Potential Supporter	Timeline	Success Factor
		KiN, LINKS, Provincial Government, RDCK	Government, KiN, Provincial Government, RDCK		
Hiking and mountain biking trails	KORTS	Adventure Tourism Operators, Community Groups, RDCK	Adventure Tourism Operators, CBT , KDCFS, MFLRORD, RDCK	In progress	5
Agricultural seed production program	LINKS	Agricultural Industry, BC Seed Coop, Food Hub, KBFA, LINKS	Agricultural Industry, BC Seed Coop, CBT , EDC RRS, KBFA, Provincial Government	In progress	4
Farm incubation program	LINKS	Agricultural Industry, EDC RRS, KACC, KBFA	CBT , EDC RRS, RDCK	In progress	5
Large-scale greenhouse	LINKS	Agricultural Industry, Private Businesses	Agricultural Industry, CBT , EDC RRS, KBFA, Private Businesses	3-6 yrs	3
Storage facility for products	LINKS	Agricultural Industry, Private Businesses, Provincial Government, RDCK	Agricultural Industry, CBT , KBFA, Private Businesses, Provincial Government	In progress	2
Community communication strategy	LINKS	Community Groups, Residents, RDCK	CBT , RDCK	In progress	5
Signage	LINKS	EDC RRS, KACC, NKLT, Provincial Government	CBT , EDC RRS, KACC, NKLT, RDCK	In progress	5
Capacity in LINKS	LINKS	LINKS	CBT , RDCK	1-3 yrs	5
Co-op for odd jobs	LINKS	LINKS	CBT , EDC RRS, LINKS	1-3 yrs	5

Strategy/Project	Champion/Lead	Advocate	Potential Supporter	Timeline	Success Factor
Purchase a cooler truck	LINKS	LINKS, Private Businesses	Agricultural Industry, CBT , EDC RRS, Private Businesses	1-3 yrs	4
Rural living skills program	LINKS	Local Residents	CBT , EDC RRS, RDCK	In progress	3
Senior's programming	LVCC	Community Groups, LINKS, LVCC	CBT , Community Groups, LINKS, LVCC, Provincial Government	In progress	5
Lardeau Valley Community Club grounds	LVCC	LVCC	CBT , LVCC, RDCK	In progress	4
Bowling league	LVCC	LVCC, Residents	CBT , LVCC	In progress	3
Bear resistant garbage bins	MFLRNORD, MOTI	GBCS, LINKS, RDCK	CBT , GBCS, MFLRNORD, MOTI, RDCK	3-6 yrs	2
Public access to waterways	MFLRNORD, MOTI	BC hydro, Community Groups, MFLRNORD, RDCK	BC hydro, CBT , Community Groups, MFLRNORD, RDCK	3-6 yrs	2
Tourism strategy	NKLT	KACC, NKLT, RDCK	CBT , EDC RRS, KACC, NKLT, Provincial Government, RDCK	1-3 yrs	4
Wildfire mitigation programs	RDCK	Forest Industry, Local Residents, Provincial Government, RDCK,	CBT , Provincial Government	In progress	3

COLUMBIA KOOTENAY CULTURAL ALLIANCE (CKCA)

8. Arts & Culture Hub

The Lardeau Valley has a very strong and robust arts and culture community, however there isn't a designated location where artists can gather to share their passion for their craft. A physical location would give them the opportunity to offer programs and events that can inspire and introduce others to the arts and culture sector.

Recommendation – Explore the feasibility of creating an artist’s hub.

Strategy/Project	Champion/Lead	Advocate	Potential Supporter	Timeline	Success Factor
Arts hub	CKCA	CKCA, Local Artists	CBT, CKCA, Local Artists	1-3 yrs	2

COMMUNITY ASSOCIATIONS (CA)

9. Usage at community halls

The Lardeau Valley has three (3) community halls that currently serve the various communities. Each community is unique and the halls offer different events and programming catering to that community. The three (3) community associations either individually or collectively could explore expanding events and programming based on feedback from community members.

Recommendation – Explore expanding events and programming at community halls based on the input from community members.

Strategy/Project	Champion/Lead	Advocate	Potential Supporter	Timeline	Success Factor
Usage at community halls	ACA, JLCA, LVCC	ACA, JLCA, LINKS, LVCC	CBT, RDCK	In progress	5

ECONOMIC DEVELOPMENT COMMISSION RURAL REVITALIZATION STRATEGY (EDC RRS)

10. Explore creating Business hub

A business hub would bring together resources across different sectors, providing customized support to help businesses analysis and utilize market studies. This would provide networking opportunities and increase knowledge and capacity, creating a foundation for success.

Recommendation – Support the EDC RRS in exploring the creation of a business hub for: agriculture, small business, home based businesses, forestry, arts and culture, acting as a resource for information sharing.

11. Supply chain management and coordination

Facilitate collaboration between local businesses, community organizations, and government in securing a supply chain through collective purchasing.

Recommendation – Support the EDC RRS in supply chain management and coordination.

12. Extend the growing season

Developing strategies to extend the growing season would enable farmers to diversify their products thus enabling them to increase their year-round production. While this exists to a certain extent, it can be further expanded upon.

Recommendation – Create a strategy to extend the growing season as part of the EDC RRS.

Strategy/Project	Champion/Lead	Advocate	Potential Supporter	Timeline	Success Factor
Business hub	EDC RRS	CFCK, KACC, LINKS	CBT, CFCK, EDC RRS , KACC, LINKS, RDCK	1-3 yrs	4
Supply chain management and coordination	EDC RRS	KACC, Kootenay Car Share, LINKS	CBT, KACC, RDCK	1-3 yrs	3
Extend the growing season	EDC RRS , Agricultural Industry	Agricultural Industry	Agricultural Industry, CBT, EDC RRS , RDCK	In progress	3
Rebrand KACC	KACC	EDC RRS , LINKS	CBT, LINKS, RDCK	1-3 yrs	5
Business directory	KACC	CFCK, KACC, LINKS, NKLT, RDCK	CBT, EDC RRS , KACC, NKLT, Provincial Government	In progress	5
Marketing strategy for technology assets	KACC	KACC, KiN, KAST, LINKS, Nelson Tech Hub,	EDC RRS , KACC, KiN, KAST, IK, LINKS, Nelson Tech Hub	1-3 yrs	4
Remote working opportunities	KACC	CFCK, LINKS, KACC, KAST, KiN, RDCK, Real Estate Industry	CFCK, EDC RRS , KACC, KAST, KiN, RDCK	1-3 yrs	3
Capacity in KACC	KACC	KACC, Private Businesses	CBT, EDC RRS	1-3 yrs	5
Buy local campaign	KACC	KACC, Private Businesses, RDCK	CBT, EDC RRS , KACC, RDCK	In progress	5
North Kootenay Lake brand	KACC	KACC, LINKS, Provincial Government, RDCK	CBT, EDC RRS , NKLT, RDCK	In progress	5
Value added forestry products	KDCFS	Forestry Industry, Private Businesses, Provincial Government, RDCK	CBT, EDC RRS , Forestry Industry, Private Businesses, MFLNRORD, RDCK	In progress	3
Internet Service	KiN	Federal Government, KiN, LINKS,	CBT, EDC RRS , Federal Government,	In progress	5

Strategy/Project	Champion/Lead	Advocate	Potential Supporter	Timeline	Success Factor
		Provincial Government, RDCK	KiN, Provincial Government RDCK		
Agricultural seed production program	LINKS	Agricultural Industry, BC Seed Coop, Food Hub, KBFA, LINKS	Agricultural Industry, BC Seed Coop, CBT, EDC RRS , KBFA, Provincial Government, RDCK	In progress	4
Farm incubation program	LINKS	Agricultural Industry, EDC RRS , KACC, KBFA	CBT, EDC RRS , RDCK	In progress	5
Large-scale greenhouse	LINKS	Agricultural Industry, Private Businesses	Agricultural Industry, CBT, EDC RRS , KBFA, Private Businesses	3-6 yrs	3
Signage	LINKS	EDC RRS , KACC, NKLT, Provincial Government	CBT, EDC RRS , KACC, NKLT, RDCK	In progress	5
Co-op for odd jobs	LINKS	LINKS	CBT, EDC RRS , LINKS	1-3 yrs	5
Purchase a cooler truck	LINKS	LINKS, Private Businesses	Agriculture Industry, CBT, EDC RRS , Private Businesses	1-3 yrs	4
Rural living skills program	LINKS	Local Residents	CBT, EDC RRS , RDCK	In progress	3
Tourism strategy	NKLT	KACC, NKLT, RDCK	CBT, EDC RRS , KACC, NKLT, Provincial Government, RDCK	1-3 yrs	4
Land-use planning	RDCK	EDC RRS , Federal Government, RDCK, Provincial Government	Provincial Government, RDCK	In progress	3

13. Residential bear resistant garbage bins

Since 2008, this program loans residential bear resistant garbage cans to residents that have experienced conflicts with bears. This has proven successful in reducing wildlife conflicts and the number of bear attractants in the communities.

Recommendation – Continue to support Grizzly Bear Coexistence Solutions to provide residential bear resistant garbage bins.

14. Electric fencing

Since 2007, this program has provided electric fencing ensuring that property owners are able to protect their land from grizzly bears. This has prevented bear conflicts and has ensured that agriculture crops, poultry, and small livestock have been able to flourish.

Recommendation – Continue to support Grizzly Bear Coexistence Solutions to provide electric fencing to residential property owners.

15. Grizzly Bear safety workshops

The Lardeau Valley is abundant with wildlife including grizzly bears, partially attributed to the location of the Meadow Creek Spawning Channel. These workshops have provided educational opportunities for residents to develop a deeper understanding of living with wildlife.

Recommendation – Continue to support Grizzly Bear Coexistence Solutions with grizzly bear safety workshops.

Strategy/Project	Champion/Lead	Advocate	Support	Timeline	Success Factor
Residential bear resistant garbage bins	GBCS	Community Groups, GBCS , LINKS, RDCK	LINKS, RDCK	In progress	5
Electric fencing	GBCS	Community Groups, GBCS , LINKS, Provincial Government, RDCK	CBT, Provincial Government, RDCK, FWCP	In progress	5
Grizzly bear safety workshops	GBCS	Community Groups, GBCS , LINKS, Provincial Government, RDCK	CBT, RDCK, FWCP	In progress	5
Bear resistant garbage bins	MFLRNORD, MOTI	GBCS , LINKS, RDCK	CBT, GBCS , MFLRNORD, MOTI, RDCK	3-6 yrs	2

JOHNSONS LANDING COMMUNITY ASSOCIATION (JLCA)

16. Johnsons Landing Hall

Community halls are a hub where residents gather for many purposes in rural communities. The Johnsons Landing hall has struggled with maintaining their water system and winterizing the building so that it can be utilized year-round.

Recommendation – JLCA to work with RDCK Area D Director to determine long term infrastructure needs. Operational needs will continue to be funded by Area D Recreational Services.

Strategy/Project	Champion/Lead	Advocate	Potential Supporter	Timeline	Success Factor
Usage at community halls	ACA, JLCA, LVCC	ACA, JLCA, LINKS, LVCC	CBT, RDCK	In progress	5
Johnsons Landing hall	JLCA	JLCA	CBT, JLCA, RDCK	In progress	4

KASLO & AREA CHAMBER OF COMMERCE (KACC)

17. Rebrand KACC

The Kaslo & Area Chamber of Commerce is based in Kaslo however its catchment area includes the area north and south of Kaslo. A re-branding and refresh exercise to include the surrounding communities, showcasing their services could enhance the impact of the services provided by the chamber.

Recommendation - Encourage the KACC to rebrand to include communities outside Kaslo.

18. Capacity in KACC

The Kaslo & Area Chamber of Commerce has struggled with developing and maintaining capacity in recent years. With the potential increased workload from the EDC RRS, the KACC is in a strong position to take a leadership role with community economic development. Capacity is key to building and maintaining a strong chamber.

Recommendation – Support KACC in creating capacity that is sustainable by accessing the CBT Non-Profit Advisor Program.

19. Buy local campaign

The Kaslo & Area Chamber of Commerce has developed an active buy local campaign. It is suggested that the program continue to be supported as required. This has been identified as part of the Rural Revitalization Strategy.

Recommendation – Continue to support the KACC and EDC RRS in supporting the buy local campaign.

20. Business directory

The Kaslo & Area Chamber of Commerce has developed a business directory in partnership with the EDC RRS. A website northkootenaylake.ca has been created which lists all businesses in the region.

Recommendation – Continue to support and enhance the existing business directory.

21. Remote working opportunities

The Lardeau Valley is known to have strong internet, this creates a great opportunity to attract remote workers. Residents no longer need to reside close to their place of work. They are able to work remotely.

Recommendation - Support the EDC RRS and KACC to develop a marketing strategy aimed at attracting remote workers.

22. Marketing strategy for technology assets

The Lardeau Valley is known to have strong technology assets, primarily as a result of KiN’s infrastructure. These assets are not well known outside the region. A marketing strategy would showcase the technology assets of the region.

Recommendation - Support the EDC RRS and KACC to develop a marketing strategy aimed at showcasing the technology assets of the region.

23. Welcome Wagon

As a way of welcoming new residents to the area, a welcome package is a great way to showcase what the community has to offer. A welcome package could include special offers from businesses, a book on the history of the region, information about youth programs and non-profit support.

Recommendation – Encourage the KACC to create a welcome package for new residents.

24. North Kootenay Lake brand

Collaborate with Kootenay regional partners on improving the “Kootenay made” brand that supports local growers, producers, manufacturers, artisans, and craftspeople. Each community within the Lardeau Valley has unique characteristics, the long-time polarizing views between communities appears to be decreasing. Improving the North Kootenay Lake brand encompassing all sectors, recognizing the past and embracing the future would bring communities together, while maintaining individual identities.

Recommendation - Support KACC and EDC RRS in improving the North Kootenay Lake brand.

Strategy/Project	Champion/Lead	Advocate	Potential Supporter	Timeline	Success Factor
Business hub	EDC RRS	CFCK, KACC , LINKS	CBT, CFCK, EDC RRS, KACC , LINKS, RDCK	1-3 yrs	4
Supply chain management and coordination	EDC RRS	KACC , Kootenay Car Share, LINKS	CBT, KACC , RDCK	1-3 yrs	3
Rebrand KACC	KACC	EDC RRS, LINKS	CBT, LINKS RDCK	1-3 yrs	5
Business directory	KACC	CFCK, KACC , LINKS, NKLT, RDCK	CBT, EDC RRS, KACC , NKLT,	In progress	5

Strategy/Project	Champion/Lead	Advocate	Potential Supporter	Timeline	Success Factor
Business hub	EDC RRS	CFCK, KACC , LINKS	CBT, CFCK, EDC RRS, KACC , LINKS, RDCK	1-3 yrs	4
Supply chain management and coordination	EDC RRS	KACC , Kootenay Car Share, LINKS	CBT, KACC , RDCK	1-3 yrs	3
Rebrand KACC	KACC	EDC RRS, LINKS	CBT, LINKS RDCK	1-3 yrs	5
			Provincial Government		
Remote working opportunities	KACC	CFCK, LINKS, KACC , KAST, KiN, RDCK, Real Estate Industry	CFCK, EDC RRS, KACC , KAST, KiN, RDCK	1-3 yrs	3
Marketing strategy for technology assets	KACC	KACC , KiN, KAST, LINKS, Nelson Tech Hub,	EDC RRS, KACC , KiN, KAST, IK, LINKS, Nelson Tech Hub	1-3 yrs	4
Capacity in KACC	KACC	KACC , Private Businesses	CBT, EDC RRS	1-3 yrs	5
Buy local campaign	KACC	KACC , Private Businesses, RDCK	CBT, EDC RRS, KACC , RDCK	In progress	5
Welcome wagon	KACC	LINKS, Private Business, RDCK	CBT, LINKS, RDCK, Real Estate Industry	3-6 yrs	5
North Kootenay Lake brand	KACC	KACC , LINKS, Provincial Government, RDCK	CBT, EDC RRS NKLT, RDCK	1-3 yrs	5
Farm incubation program	LINKS	Agricultural Industry, EDC RRS, KACC , KBFA	CBT, EDC RRS, RDCK	In progress	5
Signage	LINKS	EDC RRS, KACC , NKLT, Provincial Government	CBT, EDC RRS, KACC , NKLT, RDCK	In progress	5
Tourism strategy	NKLT	KACC , NKLT, RDCK	CBT, EDC RRS, KACC , NKLT, Provincial Government, RDCK	1-3 yrs	4

KASLO & UP THE LAKE YOUTH NETWORK (KULYN)

25. Youth mentorship strategy

The Kaslo and Up the Lake Youth Network is active in providing activities and programs for youth in the region and is successful. A mentorship program for youth would link a youth member with an adult that has similar interests. The intent would be to develop an informal relationship between the two that would provide guidance, advise and support to the younger individual.

Recommendation – Develop a youth mentorship strategy.

Strategy/Project	Champion/Lead	Advocate	Potential Supporter	Timeline	Success Factor
Mentorship strategy for youth	KULYN	LVCC, LINKS, Local Youths, RDCK	CBT, LVCC, RDCK	3-6 yrs	4

KASLO & DISTRICT COMMUNITY FOREST SOCIETY (KDCFS)

26. Value added forestry products

The forestry sector has evolved significantly over several years and this trend will likely continue as large mills cease to exist. There is excess wood waste, however the economies of scale do not exist to support a large-scale bioenergy facility. There is the opportunity for self sufficiency with value added opportunities. The KDCFS is currently assessing value added opportunities.

Recommendation – Support KDCFS in assessing value added forestry products.

27. Community forest or expand KDCFS

The KDCFS has been in existence since the 90's, in 2008 they were granted a new area-based forest license, a 25-year and 34,945 hectare tenure, providing exclusive harvesting rights to the society. The KDCFS is governed by a 9-member Board of Directors. Given that the KDCFS is established and functions well, it is suggested that expansion of the boundaries be considered rather than creating a new community forest.

Recommendation – Explore expanding the KDCFS boundaries.

Strategy/Project	Champion/Lead	Advocate	Potential Supporter	Timeline	Success Factor
Community forest or expand KDCFS	KDCFS	Community Groups, KDCFS , RDCK	MFLNRORD, RDCK	6+ yrs	2
Value added forestry products	KDCFS	Forestry Industry, Private Businesses, Provincial	CBT, EDC RRS, Forestry Industry, Private Businesses, MFLNRORD, RDCK	In progress	3

Strategy/Project	Champion/Lead	Advocate	Potential Supporter	Timeline	Success Factor
		Government, RDCK			
Hiking and mountain biking trails	KORTS	Adventure Tourism Operators, Community Groups, RDCK	Adventure Tourism Operators, CBT, KDCFS , MFLNRORD, RDCK	In progress	5

KASLO HOUSING SOCIETY (KHS)

28. Multi-generational housing project

Developing a multi-generational housing project is something to consider as a long-term project, given the age of the housing stock (66% of the housing stock built prior to 1980) and the aging population. The challenges would be location, capital costs, governance and demand.

Recommendation – Continue to explore the feasibility of developing a multi-generational housing project.

29. Senior’s housing needs assessment

In September 2020 the RDCK commissioned a Housing Needs Report, with specific statistics for Area D, the Lardeau Valley is included as part of Area D. The report notes that the senior population is the only demographic that is growing with the median age pushing upwards of 55.4 in 2016. This report provides a good starting point for further work in developing a senior housing needs assessment.

Recommendation – Develop a seniors housing needs assessment using the existing RDCK Housing Needs Report as a baseline.

30. Landlord/Tenant relationship

There is a shortage of housing in the region. Rental housing is one aspect. The relationship between the landlord and tenant can become strained which causes challenges for both parties. A better understanding and respect for each other and their obligations would serve both parties.

Recommendation – Provide support to both the tenants and landlords on best practices and their obligations.

Strategy/Project	Champion/Lead	Advocate	Potential Supporter	Timeline	Success Factor
Landlord/Tenant relationship	KHS	Community Groups, KHS , Provincial Government	KHS , Provincial Government	1-3 yrs	3
Multi-generational housing project	KHS	KHS , LINKS, Provincial Government, RDCK	CBT, KHS , Private Businesses, Provincial	In progress	2

Strategy/Project	Champion/Lead	Advocate	Potential Supporter	Timeline	Success Factor
			Government, RDCK		
Senior's housing needs assessment	KHS	KHS , LINKS, Provincial Government, RDCK	CBT, Community Groups, KHS , LINKS, Provincial Government, RDCK	In progress	5

KASLO INFONET SOCIETY (KIN)

31. Internet Service

KiN is a non-profit internet service provider based in Kaslo. They have been successful in serving the Lardeau Valley with broadband internet service for several years. They are committed to improving the level of service as technology and funding allows.

Recommendation – Continue to support KiN in providing broadband internet service to the Lardeau Valley.

32. Cell coverage

The Lardeau Valley has very limited cell coverage. Residents are divided on whether or not cell coverage is essential. With improved internet service, the need for cell coverage appears to be decreasing. The infrastructure costs for cell coverage are likely cost prohibitive for many providers.

Recommendation – Continue to focus on improved internet service.

Strategy/Project	Champion/Lead	Advocate	Potential Supporter	Timeline	Success Factor
Remote working opportunities	KACC	CFCK, LINKS, KACC, KAST, KiN , RDCK, Real Estate Industry	CFCK, EDC RRS, KACC, KAST, KiN , RDCK	1-3 yrs	3
Marketing strategy for technology assets	KACC	KACC, KiN , KAST, LINKS, Nelson Tech Hub,	EDC RRS, KACC, KiN , KAST, IK, LINKS, Nelson Tech Hub	1-3 yrs	4
Internet service	KiN	Federal Government, KiN , LINKS, Provincial Government, RDCK	CBT, EDC RRS, Federal Government, KiN , Provincial Government, RDCK	In progress	5

Strategy/Project	Champion/Lead	Advocate	Potential Supporter	Timeline	Success Factor
Cell coverage	KiN	Federal Government, KiN , LINKS, Provincial Government	Federal Government	6+ yrs	1

KASLO OUTDOOR RECREATION AND TRAILS SOCIETY (KORTS)

33. Hiking and mountain biking trails

The Lardeau Valley is known to have abundant hiking and mountain biking trails that are maintained and developed to varying degrees. These natural amenities are popular with both residents and visitors. Developing sanctioned trails could reduce damage to ecologically sensitive lands. Depending on the location, the jurisdiction will vary. Continued improvements of these trails will add to the residents and visitors experience.

Recommendation – Continue to support KORTS in developing sanctioned hiking and mountain biking trails.

Strategy/Project	Champion/Lead	Advocate	Potential Supporter	Timeline	Success Factor
Hiking and mountain biking trails	KORTS	Adventure Tourism Operators, Community Groups, RDCK	Adventure Tourism Operators, CBT, KDCFS, MFLNRORD, RDCK	In progress	5
Road access to cut blocks	MFLNRORD	Community Groups, Conservation Groups, Forestry Industry, Private Businesses, MFLNRORD	Community Groups, Conservation Groups, Forestry Industry, KORTS , MFLNRORD, RDCK	1-3 yrs	2
Recreation commission (Area D & Village of Kaslo)	RDCK/VoK	KORTS , RDCK, Residents	Community Groups, KORTS , RDCK	1-3 yrs	3

34. Farm incubation program

This program has proven successful in supporting a vibrant agricultural sector in improving local food security in the commercial agricultural industry. A program review is suggested to ensure its success and evolution of the program into the future. This evaluation should include a strategy for centralizing information.

Recommendation – Initiate an evaluation of the success and challenges of the current program, with the objective to create a more robust program that meets and identifies the current and future needs of the agricultural sector.

35. Community communication strategy

LINKS has a weekly email newsletter for residents. The newsletter communicates upcoming events and notices from various sources. The community communication strategy could include a listing for co-op jobs.

Recommendation – Continue to support LINKS in their weekly community communications.

36. Education

The local primary school has seen a decline in enrollment over the past several years, this is of significant concern to many residents. For those that choose to home school their children, home school support is vital. Course offerings that are relevant to residents by post secondary institutions are equally as important. Access to educational services is key to maintaining a healthy community.

Recommendation - Continue to advocate for sustainable educational opportunities for all ages of students.

37. Signage

Many residents would like to see improved and increased signage. Highway directional signage is key to welcoming visitors. A sign advising travellers the distance without cell service would help in managing expectations and improve public safety. A sign identifying the following would be beneficial: wifi hotspots, key businesses, public washrooms, trail heads, views capes and tourist attractions.

Recommendation – Develop a signage program that will continue to improve and increase the quantity, quality and consistency of signs.

38. Capacity in LINKS

For many years, LINKS has provided support to residents by offering many different and unique programs. While the organization continues to evolve to meet the needs of residents, ensuring that capacity is maintained for project completion and sustainable programs is key to their success.

Recommendation - Support LINKS in creating capacity that is sustainable by accessing the CBT Non-Profit Advisor Program.

39. Storage facility for products

Residents have identified that the lack of a storage facility for products is a barrier to success. The size, location and governance (for profit, co-op, non-profit) remain unknown.

Recommendation – Explore the feasibility to build a storage facility for products.

40. Agricultural seed production program

There are several agriculture seed production programs that exist both provincially and locally. These programs are key to the continued success of the sector.

Recommendation – Continue to support various agricultural seed production programs.

41. Purchase a cooler truck

Transporting products to markets was identified as a barrier to success for agricultural producers. A solution would be to purchase a cooler truck, however the inability to transport organic and non-organic products together is a barrier. A feasibility study would determine if it is a viable option.

Recommendation – Create a feasibility study to determine if purchasing a cooler truck is viable.

42. Large-scale greenhouse

A large-scale commercial greenhouse would allow for year-round growing. The capital costs may be prohibitive for private businesses. A feasibility study could be undertaken by a non-profit to determine the capital costs, ideal location and delivery method (ie. a private business venture, non-profit social enterprise, or a co-op model).

Recommendation – Support a feasibility study for a large-scale greenhouse.

43. Co-op for odd jobs

The residents of the region are resilient and support each other as needed. Informally there are many cases of neighbours helping neighbours. A co-op for odd jobs would formalize the process, ensuring that those that need support with a project be linked with someone that could complete it. Potentially this could be included as part of the community communication strategy.

Recommendation – Explore the feasibility of creating a co-op for odd jobs.

44. Rural living skills program

The Lardeau Valley is rural and remote, a rural living skills program is key to creating resilience and self sufficiency. The current programs offered are relevant and meeting the community's needs.

Recommendation – LINKS continue to offer rural living skills programs.

Strategy/Project	Champion/Lead	Advocate	Potential Supporter	Timeline	Success Factor
Usage at community halls	ACA, JLCA, LVCC	ACA, JLCA, LINKS, LVCC	CBT, RDCK	In progress	5

Strategy/Project	Champion/Lead	Advocate	Potential Supporter	Timeline	Success Factor
Business hub	EDC RRS	CFCK, KACC, LINKS	CBT, CFCK, EDC RRS, KACC, LINKS , RDCK	1-3 yrs	4
Supply chain management and coordination	EDC RRS	KACC, Kootenay Car Share, LINKS	CBT, KACC, RDCK	1-3 yrs	3
Residential bear resistant garbage bins	GBCS	Community Groups, GBCS, LINKS , RDCK	LINKS , RDCK	In progress	5
Electric fencing	GBCS	Community Groups, GBCS, LINKS , Provincial Government, RDCK	CBT, Provincial Government, RDCK, FWCP	In progress	5
Grizzly bear safety workshops	GBCS	Community Groups, GBCS, LINKS , Provincial Government, RDCK	CBT, RDCK, FWCP	In progress	5
Tele-health conferencing	IH	LINKS , RDCK	IH	3-6 yrs	4
Rebrand KACC	KACC	EDC RRS, LINKS	CBT, LINKS , RDCK	1-3 yrs	5
Business directory	KACC	CFCK, KACC, LINKS , NKLT, RDCK	CBT, EDC RRS, KACC, NKLT, Provincial Government	In progress	5
Remote working opportunities	KACC	CFCK, LINKS , KACC, KAST, KiN, RDCK, Real Estate Industry	CFCK, EDC RRS, KACC, KAST, KiN, RDCK	1-3 yrs	3
Welcome wagon	KACC	LINKS , Private Business, RDCK	CBT, LINKS , RDCK, Real Estate Industry	3-6 yrs	5
North Kootenay Lake brand	KACC	KACC, LINKS , Provincial Government, RDCK	CBT, EDC RRS, NKLT, RDCK	1-3 yrs	5

Strategy/Project	Champion/Lead	Advocate	Potential Supporter	Timeline	Success Factor
Mentorship strategy for youth	KULYN	LVCC, LINKS , Local Youths, RDCK	CBT, LVCC, RDCK	3-6 yrs	4
Multi-generational housing project	KHS	KHS, LINKS , Provincial Government, RDCK	CBT, KHS, Private Businesses, Provincial Government, RDCK	In progress	2
Senior's housing needs assessment	KHS	KHS, LINKS , Provincial Government, RDCK	CBT, Community Groups, KHS, LINKS , Provincial Government, RDCK	In progress	5
Internet service	KiN	Federal Government, KiN, LINKS , Provincial Government, RDCK	CBT, EDC RRS, Federal Government, KiN, Provincial Government, RDCK	In progress	5
Cell coverage	KiN	Federal Government, KiN, LINKS , Provincial Government	Federal Government	6+ yrs	1
Agricultural seed production program	LINKS	Agricultural Industry, BC Seed Coop, Food Hub, KBFA, LINKS	Agricultural Industry, BC Seed Coop, CBT, EDC RRS, KBFA, Provincial Government	In progress	4
Farm incubation program	LINKS	Agricultural Industry, EDC RRS, KACC, KBFA	CBT, EDC RSS, RDCK	In progress	5
Large-scale greenhouse	LINKS	Agricultural Industry, Private Businesses	Agricultural Industry, CBT, EDC RRS, KBFA, Private Businesses	3-6 yrs	3
Storage facility for products	LINKS	Agricultural Industry,	Agricultural Industry, CBT,	In progress	2

Strategy/Project	Champion/Lead	Advocate	Potential Supporter	Timeline	Success Factor
		Private Businesses, Provincial Government, RDCK	KBFA, Private Businesses, Provincial Government		
Community communication strategy	LINKS	Community Groups, Residents, RDCK	CBT, RDCK	In progress	5
Signage	LINKS	EDC RRS, KACC, NKLT, Provincial Government	CBT, EDC RRS, KACC, NKLT, RDCK	In progress	5
Capacity in LINKS	LINKS	LINKS	CBT, RDCK	1-3 yrs	5
Co-op for odd jobs	LINKS	LINKS	CBT, EDC RRS, LINKS	1-3 yrs	5
Purchase a cooler truck	LINKS	LINKS , Private Businesses	Agricultural Industry, CBT, EDC RRS, Private Businesses	1-3 yrs	4
Rural living skills program	LINKS	Local Residents	CBT, EDC RRS, RDCK	In progress	3
Education	LINKS	RDCK, Residents	LINKS , Selkirk College	In progress	3
Senior's programming	LVCC	Community Groups, LINKS , LVCC	CBT, Community Groups, LINKS , LVCC, Provincial Government	In progress	5
Bear resistant garbage bins	MFLRNORD, MOTI	GBCS, LINKS , RDCK	CBT, GBCS, MFLRNORD, MOTI, RDCK	3-6 yrs	2
Home retro-fit programs	RDCK	LINKS , RDCK, Residents	LINKS , Provincial Government, RDCK	1-3 yrs	2
Land inventory	RDCK	LINKS , Provincial Government, RDCK	Federal Government, Provincial Government, RDCK, Residents	In progress	1

Strategy/Project	Champion/Lead	Advocate	Potential Supporter	Timeline	Success Factor
Emergency preparedness	RDCK	LINKS, Provincial Government, RDCK, Residents	Provincial Government, RDCK	In progress	5
Reuse center at transfer station	RDCK	LINKS, RDCK	LINKS, RDCK	3-6 yrs	3
Government barriers	RDCK	LINKS, Residents	Federal Government, Provincial Government, RDCK	In progress	3

LARDEAU VALLEY COMMUNITY CLUB (LVCC)

45. Lardeau Valley Community Club grounds

Community halls are a hub where residents gather for many purposes. The LVCC is host to community meetings, has a commercial kitchen and bowling alley. The grounds include a playground, shower house and campground. Long term improvements could include development of the additional amenities at the campground.

Recommendation - Work with RDCK Area D Director to determine long term infrastructure needs. Operational needs will continue to be covered with Area D Recreational Services.

46. Bowling league

The LVCC has a bowling alley. This is a unique asset that provides the opportunity for residents to gather in an indoor social setting. The re-introduction of a bowling league would be a great winter activity for residents. Success requires that residents be committed to participating.

Recommendation – Gauge the level of support from residents to re-introduce the bowling league, this will determine further action.

47. Senior’s programming

Currently, there are several programs offered to seniors. The level of participation varies depending on the season and the program. In an effort to increase participation continued communication of the programs and events would be beneficial. Relevant programming is important to keep seniors active, engaged and healthy. The LVCC is the primary provider of these programs.

Recommendation – Continued support for seniors programming by the LVCC.

Strategy/Project	Champion/Lead	Advocate	Potential Supporter	Timeline	Success Factor
Usage at community halls	ACA, JLCA, LVCC	ACA, JLCA, LINKS, LVCC	CBT, RDCK	In progress	5

Mentorship strategy for youth	KULYN	LVCC, LINKS, Local Youths, RDCK	CBT, LVCC, RDCK	3-6 yrs	4
Senior's programming	LVCC	Community Groups, LINKS, LVCC	CBT, Community Groups, LINKS, LVCC, Provincial Government	In progress	5
Lardeau Valley Community Club grounds	LVCC	LVCC	CBT, LVCC, RDCK	In progress	4
Bowling league	LVCC	LVCC, Residents	CBT, LVCC	In progress	3

MT. WILLET WILDERNESS FOREVER (MWWF)

48. Expand the boundary of Purcell Wilderness Conservancy

The Purcell Wilderness Conservancy Park is one of the most significant wilderness areas in southern British Columbia, recognized for its scenery and wilderness recreation opportunities. In the forming of the Conservancy in 1974 and boundary revision in 1995, this slope known locally as the Argenta-Johnsons Landing face was not included. Many residents in the area would like to see a boundary expansion to include the Argenta-Johnsons Landing face to protect this valuable ecosystem now and for the future.

Recommendation – Advocate for the expansion of the Purcell Wilderness Conservancy to the shore of Kootenay Lake between Argenta and Johnsons Landing on crown land.

Project/Strategy	Champion/Lead	Advocate	Potential Support	Timeline	Success Factor
Expansion of Purcell Wilderness Conservancy	MWWF	Environmental Groups, Provincial Government	Provincial Government	3-6 yrs	3

NELSON KOOTENAY LAKE TOURISM (NKLT)

49. Develop a tourism strategy

The recent loss of two (2) adventure tourism businesses will impact the local tourism economy. The Lardeau Valley is rich in natural values and amenities. A tourism strategy that includes maps, (digital and hard copy) showcasing the historical past, mining, fishing, birding, hiking, community assets, wifi hotspots, local museum, parks, backcountry trails, viewpoints and lake access would be beneficial. Research and analysis of current tourism trends, opportunities and challenges will result in a tourism development plan that guides investment, marketing and policy.

Recommendation – Encourage Nelson Kootenay Lake Tourism to develop a tourism strategy.

Strategy/Project	Champion/Lead	Advocate	Potential Supporter	Timeline	Success Factor
Business directory	KACC	CFCK, KACC, LINKS, NKLT , RDCK	CBT, EDC RRS, KACC, NKLT , Provincial Government	In progress	5
North Kootenay Lake brand	KACC	KACC, LINKS, Provincial Government, RDCK	CBT, EDC RRS, NKLT , RDCK	In progress	5
Signage	LINKS	EDC RRS, KACC, NKLT , Provincial Government	CBT, EDC RRS, KACC, NKLT , RDCK	In progress	5
Tourism strategy	NKLT	KACC, NKLT , RDCK	CBT, EDC RRS, KACC, NKLT , Provincial Government, RDCK	1-3 yrs	4
Land Inventory	RDCK	LINKS, RDCK, Residents	LINKS, NKLT , Provincial Government, RDCK	1-3 yrs	1

PROVINCIAL GOVERNMENT

INTERIOR HEALTH (IH)

50. Tele-health conferencing

Starting in March 2021, the Kaslo and North Kootenay Lake region is part of the BC Rural Health Pilot Hub. The purpose of the pilot is to create and test a cloud-based interactive communications platform as a tool to increase citizen engagement in rural health and wellness in a safe and supportive manner.

Recommendation – Encourage participation in the pilot project.

MINISTRY, FOREST LANDS NATURAL RESOURCE OPERATIONS & RURAL DEVELOPMENT (MFLNRORD)

51. Best practices in forestry management

As the forestry industry continues to evolve, is it important to ensure that best practices are adopted as technology and efficiencies are discovered and implemented. This is primarily the role of the provincial government.

Recommendation – Continue to advocate for best practices in forestry management.

52. Bear resistant garbage bins

The Lardeau Valley has an abundance of wildlife. There is a high level of respect for living with wildlife by residents and visitors. An improvement to visitors' experience, reduce bear attractants and decrease potential interaction with wildlife, the installation of bear resistant

garbage bins at strategic locations. Locations to consider would be: highway pullouts, trail heads, community halls, recreation sites. The location would determine who would be responsible for the costs.

Recommendation – Explore the feasibility of installing bear resistant garbage bins at strategic locations. Explore participating in the WildSafe BC program.

53. Road access to cut blocks

The Lardeau Valley has seen logging for generations. Many residents would like improved access to cut blocks (once they are no longer in operation) for recreational purposes. There may be some unintended consequences from this activity; therefore, it is suggested that this be explored in an effort to have a better understanding of the benefits and consequences.

Recommendation – Explore improved road access to cut blocks for recreational purposes.

54. Meadow Creek spawning channel

The Meadow Creek spawning channel was constructed in 1967 to partially replace kokanee production and spawning habitat lost when the Duncan Dam was constructed. It was built by BC Hydro and managed by the province. It is considered a community asset.

Recommendation – Continue to support the Meadow Creek spawning channel.

MINISTRY, TRANSPORTATION AND INFRASTRUCTURE (MOTI)

55. Public access to waterways

There are many public access points at the north end of Kootenay Lake, Duncan reservoir and surrounding rivers. Depending on the location, jurisdiction varies as does the level of development and usage all of which can be complex. Creating an inventory of the existing amenities, potential improvements, jurisdiction and level of community support at each location would dictate if and where further action could be taken to improve and enhance public access.

Recommendation – Create an inventory of public access to waterways.

Strategy/Project	Champion/Lead	Advocate	Potential Supporter	Timeline	Success Factor
Agricultural seed production program	LINKS	Agricultural Industry, BC Seed Coop, Food Hub, KBFA, LINKS	Agricultural Industry, BC Seed Coop, CBT, EDC RRS, KBFA, Provincial Government	In progress	4
Storage facility for products	LINKS	Agricultural Industry, Private Businesses, Provincial Government , RDCK	Agricultural Industry, CBT, KBFA, Private Businesses, Provincial Government	In progress	2

Strategy/Project	Champion/Lead	Advocate	Potential Supporter	Timeline	Success Factor
Business directory	KACC	CFCK, KACC, LINKS, NKLT, RDCK	CBT, EDC RRS, KACC, NKLT, Provincial Government	In progress	5
North Kootenay Lake brand	KACC	KACC, LINKS, Provincial Government , RDCK	CBT, EDC RRS, NKLT, RDCK	In progress	5
Value added forestry products	KDCFS	Forestry Industry, Private Businesses, Provincial Government , RDCK	CBT, EDC RRS, Forestry Industry, Private Businesses, MFLNRORD , RDCK	In progress	3
Multi-generational housing project	KHS	KHS, LINKS, Provincial Government , RDCK	CBT, KHS, Private Businesses, Provincial Government , RDCK	In progress	2
Senior's housing needs assessment	KHS	KHS, LINKS, Provincial Government , RDCK	CBT, Community Groups, KHS, LINKS, Provincial Government , RDCK	In progress	5
Internet Service	KiN	Federal Government, KiN, LINKS, Provincial Government , RDCK	CBT, EDC RRS, Federal Government, KiN, Provincial Government , RDCK	In progress	5
Signage	LINKS	EDC RRS, KACC, NKLT, Provincial Government	CBT, EDC RRS, KACC, NKLT, RDCK	In progress	5
Electric fencing	GBCS	Community Groups, GBCS, LINKS, Provincial Government , RDCK	CBT, Provincial Government , RDCK, FWCP	In progress	5
Grizzly bear safety workshops	GBCS	Community Groups, GBCS, LINKS,	CBT, RDCK, FWCP	In progress	5

Strategy/Project	Champion/Lead	Advocate	Potential Supporter	Timeline	Success Factor
		Provincial Government, RDCK			
Senior's programming	LVCC	Community Groups, LINKS, LVCC	CBT, Community Groups, LINKS, LVCC, Provincial Government	In progress	5
Tourism strategy	NKLT	KACC, NKLT, RDCK	CBT, EDC RRS, KACC, NKLT, Provincial Government, RDCK	1-3 yrs	4
Wildfire mitigation programs	RDCK	Forest Industry, Local Residents, Provincial Government, RDCK,	CBT, Provincial Government	In progress	3
Land-use planning	RDCK	EDC RRS, Federal Government, RDCK, Provincial Government	Provincial Government, RDCK	In progress	3
Hiking and mountain biking trails	KORTS	Adventure Tourism Operators, Community Groups, RDCK	Adventure Tourism Operators, CBT, KDCFS, MFLNRORD, RDCK	In progress	5
Landlord/Tenant relationship	KHS	Community Groups, KHS, Provincial Government	KHS, Provincial Government	1-3 yrs	3
Cell coverage	KiN	Federal Government, KiN, LINKS, Provincial Government	Federal Government	6+ yrs	1
Home retro-fit programs	RDCK	LINKS, RDCK, Residents	LINKS, Provincial Government, RDCK	1-3 yrs	2
Land inventory	RDCK	LINKS, Provincial	Federal Government, Provincial	In progress	1

Strategy/Project	Champion/Lead	Advocate	Potential Supporter	Timeline	Success Factor
		Government, RDCK	Government, RDCK, Residents		
Emergency preparedness	RDCK	LINKS, Provincial Government, RDCK, Residents	Provincial Government, RDCK	In progress	5
Government barriers	RDCK	LINKS, Residents	Federal Government, Provincial Government, RDCK	In progress	3
Community forest or expand KDCFS	KDCFS	Community Groups, KDCFS, RDCK	MFLNRORD, RDCK	6+ yrs	2
Best practices in forestry management	MFLNRORD	Community Groups, Forestry Industry, Private Businesses, RDCK	Community Groups, Forestry Industry	In progress	3
Bear resistant garbage bins	MFLNRORD, MOTI	GBCS, LINKS, RDCK	CBT, GBCS, MFLNRORD, MOTI, RDCK	3-6 yrs	2
Road access to cut blocks	MFLNRORD	Community Groups, Conservation Groups, Forestry Industry, Private Businesses, MFLNRORD	Community Groups, Conservation Groups, Forestry Industry, KORTS, MFLNRORD, RDCK	1-3 yrs	2
Public access to waterways	MFLNRORD, MOTI	BC hydro, Community Groups, MFLNRORD, RDCK	BC hydro, CBT, Community Groups, MFLNRORD, RDCK	3-6 yrs	2
Tele-health conferencing	IH	LINKS, RDCK	IH	3-6 yrs	4

REGIONAL DISTRICT OF CENTRAL KOOTENAY (RDCK)

56. Land inventory

With many different jurisdictions, it is unclear what the objective of creating a land inventory for multiple sectors would achieve. In addition, some sectors have already completed this work for their specific purposes. For instance, forestry mapping exists and an inventory for

agricultural land was completed several years ago. Although residents suggested this would be useful information there were no suggestions on how or why the information would be used.

Recommendation – Determine clear objectives, purpose and outcomes prior to further exploration.

57. Emergency preparedness

The region continues to experience prolonged power outages. The community halls are considered essential warming halls: thus, they need to ensure that they have backup power and are stocked accordingly. Satellite phones should be in place at each hall. Identifying the most vulnerable and developing a phone tree would be beneficial. The ongoing work of the Lardeau Valley Power Stability Committee should be supported and the recommendations considered.

Recommendation – Continue to improve emergency preparedness.

58. Home retro-fit programs

Home retro-fit programs have existed for several years, they have included: low flush toilets, wood stoves, water heaters and pumps. The RDCK has a regional energy efficiency program in place. A barrier to entry into the program is the increased high cost of building supplies and the overly complex process. Given the number of power outages in the region, a retro-fit program for auxiliary generators should be something to consider.

Recommendation – Continue to expand and offer home retro-fit programs, including home auxiliary generators.

59. Land-use planning

Land use regulations are key to foundational economic stability and resiliency. Currently there is little interest in land use planning. The Advisory Planning Commission struggles to attract and retain volunteers. Early discussions on land use planning are slated to occur in 2021 by the RDCK. The initial objective is to explain what land use planning is and the benefits and challenges of land use planning. The outcomes of these discussions will determine next steps.

Recommendation – Encourage participation in land use planning discussions.

60. Government barriers

Residents expressed several barriers that discourage them from taking on projects. These include: building codes, permitting costs, ALR regulations, water and sewer servicing, income taxation (feel that they should qualify for northern living allowance) and business taxation levels.

Recommendation - Work with RDCK staff and Area D Director to develop a priority list of the barriers and strategies to overcome them.

61. Zero waste initiative

The region needs support for composting and recyclable materials, due to the remote location this is challenging. The coordination of who and how items can be disposed of properly has not been established. The disposal of used oil is an example.

Recommendation – Support the RDCK in their zero-waste initiative.

62. Wildfire mitigation programs

The risk of wildfire in the region is high during wildfire season. Property owners are responsible to fire smart their own properties. The RDCK is actively working with property owners in developing Fire Smart work plans and encouraging property owners to take the lead on their properties. The provincial government is responsible for wildfire mitigation on crown land. Both of these programs are important to minimize the impact of wildfires.

Recommendation – Advocate for the continuation of wildfire mitigation programs on private and crown land.

63. Remote fire service

Residents expressed support for creating a remote fire service. Given low population density, assessment base and fire regulations set by the Office of the Fire Commissioner this would not be achievable in the short term. The focus should be to encourage residents to participate in the Fire Smart community recognition program.

Recommendation – Encourage residents to participate in the Fire Smart community recognition program.

64. Reuse centre at transfer station

The transfer station has an informal re-use centre for residents to exchange items rather than dispose of them. This is a free service and has limited controls in place. There is the opportunity to increase the level of activity, leading to increased use of this service.

Recommendation – Explore improvements for the re-use centre.

65. Recreation commission (Area D and Village of Kaslo)

The recreation commission's purpose is to provide guidance and feedback to the Area D Director on tax allocation for various recreational facilities. In recent years, the level of engagement for this commission (and others) has been low.

Recommendation – Encourage participation in the recreation commission, pursue partnership with KORTS to enhance outdoor recreation and explore new opportunities.

Strategy/Project	Champion/Lead	Advocate	Potential Supporter	Timeline	Success Factor
Argenta hall	ACA	ACA	ACA, CBT, RDCK	In progress	4
Usage at community halls	ACA, JLCA, LVCC	ACA, JLCA, LINKS, LVCC	CBT, RDCK	In progress	5
Privately owned conservation land for agriculture use	Agricultural Industry	Conservation land owners, Agricultural Industry, RDCK	CBT, Conservation land owners, RDCK	3-6 yrs	2
Business hub	EDC RRS	CFCK, KACC, LINKS	CBT, CFCK, EDC RRS, KACC, LINKS, RDCK	1-3 yrs	4

Strategy/Project	Champion/Lead	Advocate	Potential Supporter	Timeline	Success Factor
Supply chain management and coordination	EDC RRS	KACC, Kootenay Car Share, LINKS	CBT, KACC, RDCK	1-3 yrs	3
Extend the growing season	EDC RRS	Agricultural Industry	Agricultural Industry, CBT, EDC RRS, RDCK	In progress	3
Residential bear resistant garbage bins	GBCS	Community Groups, GBCS, LINKS, RDCK	LINKS, RDCK	In progress	5
Electric fencing	GBCS	Community Groups, GBCS, LINKS, Provincial Government, RDCK	CBT, Provincial Government, RDCK , FWCP	In progress	5
Grizzly bear safety workshops	GBCS	Community Groups, GBCS, LINKS, Provincial Government, RDCK	CBT, RDCK , FWCP	In progress	5
Tele-health conferencing	IH	LINKS, RDCK	IH	3-6 yrs	4
Johnsons Landing hall	JLCA	JLCA	CBT, JLCA, RDCK	In progress	4
Rebrand KACC	KACC	EDC RRS, LINKS	CBT, LINKS, RDCK	1-3 yrs	5
Business directory	KACC	CFCK, KACC, LINKS, NKLT, RDCK	CBT, EDC RRS, KACC, NKLT, Provincial Government	In progress	5
Remote working opportunities	KACC	CFCK, LINKS, KACC, KAST, KIN, RDCK , Real Estate Industry	CFCK, EDC RRS, KACC, KAST, KIN, RDCK	1-3 yrs	3
Buy local campaign	KACC	KACC, Private Businesses, RDCK	CBT, EDC RRS, KACC, Provincial Government, RDCK	In progress	5
Welcome wagon	KACC	LINKS, Private Business, RDCK	CBT, LINKS, RDCK , Real Estate Industry	3-6 yrs	5

Strategy/Project	Champion/Lead	Advocate	Potential Supporter	Timeline	Success Factor
Signage	LINKS	EDC RRS, KACC, NKLT, Provincial Government	CBT, EDC RRS, KACC, NKLT, RDCK	In progress	5
North Kootenay Lake brand	KACC	KACC, LINKS, Provincial Government, RDCK	CBT, EDC RRS, NKLT, RDCK	1-3 yrs	5
Mentorship strategy for youth	KULYN	LVCC, LINKS, Local Youths, RDCK	CBT, LVCC, RDCK	3-6 yrs	4
Community forest or expand KDCFS	KDCFS	Community Groups, KDCFS, RDCK	MFLNRORD, RDCK	6+ yrs	2
Value added forestry products	KDCFS	Forestry Industry, Private Businesses, Provincial Government, RDCK	CBT, EDC RRS, Forestry Industry, Private Businesses, MFLNRORD, RDCK	In progress	3
Multi-generational housing project	KHS	KHS, LINKS, Provincial Government, RDCK	CBT, KHS, Private Businesses, Provincial Government, RDCK	In progress	2
Senior's housing needs assessment	KHS	KHS, LINKS, Provincial Government, RDCK	CBT, Community Groups, KHS, LINKS, Provincial Government, RDCK	In progress	5
Internet service	KiN	Federal Government, KiN, LINKS, Provincial Government, RDCK	CBT, EDC RRS, Federal Government, KiN, Provincial Government, RDCK	In progress	5
Hiking and mountain biking trails	KORTS	Adventure Tourism Operators, Community Groups, RDCK	Adventure Tourism Operators, CBT, KDCFS,	In progress	5

Strategy/Project	Champion/Lead	Advocate	Potential Supporter	Timeline	Success Factor
			MFLRORD, RDCK		
Farm incubation program	LINKS	Agricultural Industry, EDC RRS, KACC, KBFA	CBT, EDC RSS, RDCK	In progress	5
Storage facility for products	LINKS	Agricultural Industry, Private Businesses, Provincial Government, RDCK	Agricultural Industry, CBT, KBFA, Private Businesses, Provincial Government	In progress	2
Community communication strategy	LINKS	Community Groups, Residents, RDCK	CBT, RDCK	In progress	5
Signage	LINKS	EDC RRS, KACC, NKLT, Provincial Government	CBT, EDC RRS, KACC, NKLT, RDCK	In progress	5
Capacity in LINKS	LINKS	LINKS	CBT, RDCK	1-3 yrs	5
Lardeau Valley Community Club grounds	LVCC	LVCC	CBT, LVCC, RDCK	In progress	4
Best practices in forestry management	MFLNRORD	Community Groups, Forestry Industry, Private Businesses, RDCK	Community Groups, Forestry Industry	In progress	3
Bear resistant garbage bins	MFLRNORD, MOTI	GBCS, LINKS, RDCK	CBT, GBCS, MFLNRORD, MOTI, RDCK	3-6 yrs	2
Road access to cut blocks	MFLRNORD, MOTI	Community Groups, Conservation Groups, Forestry Industry, Private Businesses, MFLNRORD	Community Groups, Conservation Groups, Forestry Industry, KORTS, MFLNRORD, RDCK	1-3 yrs	2

Strategy/Project	Champion/Lead	Advocate	Potential Supporter	Timeline	Success Factor
Public access to waterways	MFRNORD	BC hydro, Community Groups, MFLRORD, RDCK	BC hydro, CBT, Community Groups, MFLRORD, RDCK	3-6 yrs	2
Tourism strategy	NKLT	KACC, NKLT, RDCK	CBT, EDC RRS, KACC, NKLT, Provincial Government, RDCK	1-3 yrs	4
Land Inventory	RDCK	LINKS, RDCK , Residents	LINKS, NKLT, Provincial Government, RDCK	1-3 yrs	1
Wildfire mitigation programs	RDCK	Forest Industry, Local Residents, Provincial government, RDCK	CBT, RDCK , Provincial Government	In progress	3
Land-use planning	RDCK	EDC RRS, Federal Government, Provincial Government RDCK ,	Provincial Government, RDCK	In progress	3
Zero waste Initiative	RDCK	Food Hub, RDCK	RDCK	3-6 yrs	2
Recreation commission (Area D & Village of Kaslo)	RDCK/VoK	KORTS, RDCK , Residents	Community Groups, KORTS, RDCK	1-3 yrs	3
Remote fire service	RDCK	KVFD, First Responders, RDCK	KVFD, First Responders, RDCK	6+ yrs	1
Home retro-fit programs	RDCK	LINKS, Provincial Government, RDCK	Federal Government, Provincial Government, RDCK	In progress	2
Emergency preparedness	RDCK	LINKS, Provincial Government,	CBT, Provincial Government, RDCK	In progress	5

Strategy/Project	Champion/Lead	Advocate	Potential Supporter	Timeline	Success Factor
		RDCK, Residents			
Reuse center at transfer station	RDCK	LINKS, RDCK	LINKS, RDCK	3-6 yrs	3
Government barriers	RDCK	LINKS, Residents	Federal Government, Provincial Government, RDCK	In progress	3